



Layers:

Available Data Layers:

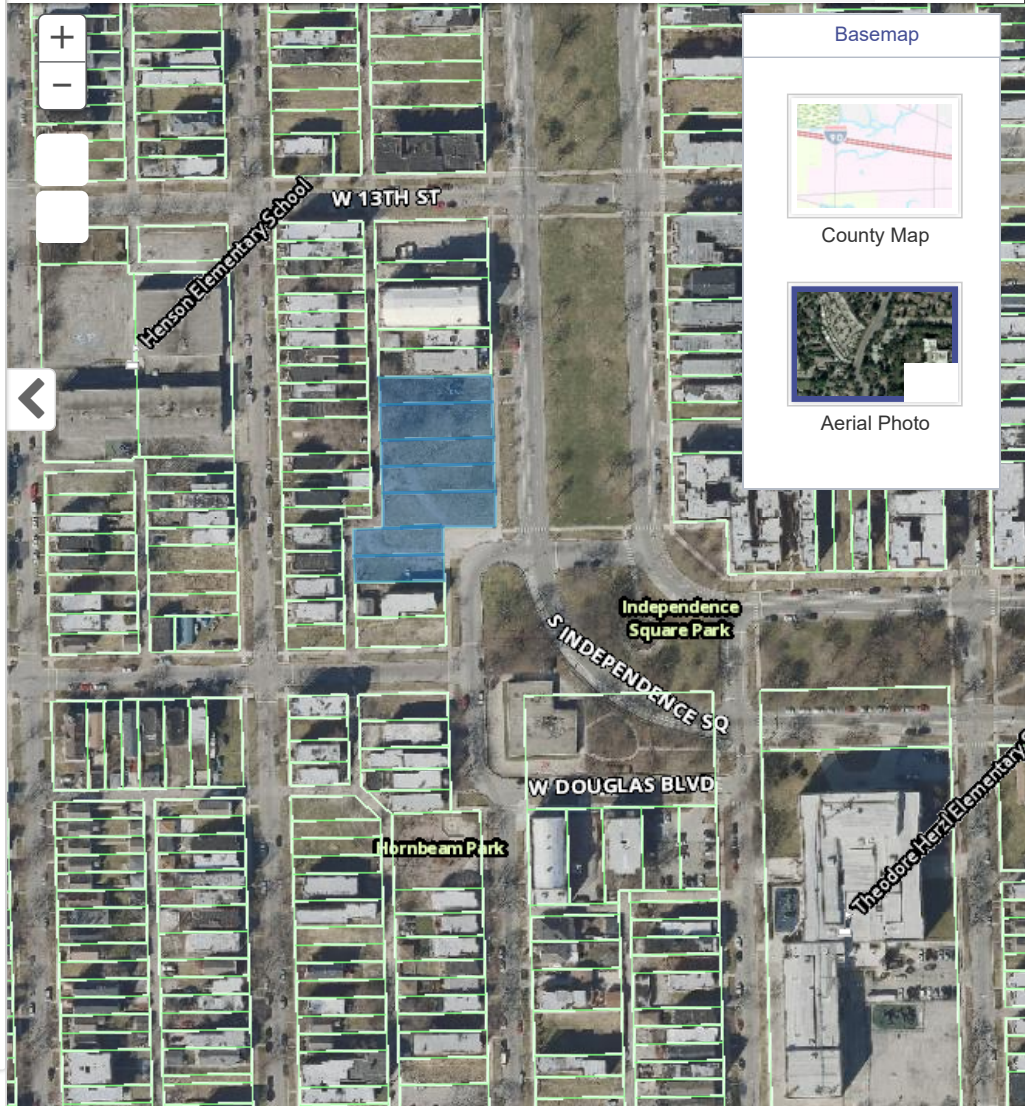
- Cemetery
- Hospital
- County Facility
 - Administration
 - Courthouse
 - Forest Preserve
 - Health Care
 - Public Safety
- School
 - Public School
 - Private School
- Forest Preserve
 - Boat Launch
 - Fishing Lake
 - Nature Preserve
 - Picnic Grove
 - no shelter
 - shelter
- Recreation
 - Bike Rental
 - Camping
 - Education Center

measure

select parcels

print map

layers



The best source for your PIN is your deed or tax bill, or other documents from the purchase of your home. Matches from this site are not guaranteed.